



# Improving Patient Outcomes

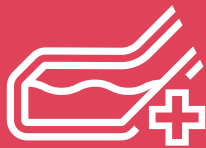






# Vernacare

*Our market-leading brands are used by over one million people every day - all with a focus on reducing risk and enhancing dignity.*



## TOILETING

**Single-Use Containers**

**Disposal Units**

**Accessories**

**Commode Chairs**



## PERSONAL HYGIENE

**Skin Cleansing Wipes**

**Continence Care**

**Bed Bathing Solutions**



## ENVIRONMENTAL CLEANING & DISINFECTION

**Surface Wipes**

**Non-invasive Medical  
Device wipes**

# SINGLE-USE CONTAINERS

## Toileting

Produced using water and recycled over-issued newsprint, our wide range of single-use disposable containers are designed to replace re-usable plastic or stainless-steel alternatives; delivering an environmentally friendly and cost effective way of preventing cross-infection.



### Male Urinal Bottle.

Encourages independent toileting, providing convenience, dignity and comfort to patients. Square design stands upright if required.

**Case Quantity: 120**

**Product Code: 103AA120**



### VernaFem

Increased patient safety.  
Increased patient dignity and comfort.

Reduced CAUTI costs.

**Case Quantity: 24**

**Product Code: 108AA024**



### Bedpan Liner

Ideal for general toileting of patients and can be used either in bed or in a commode chair.

**Case Quantity: 75**

**Product Code: 121AA075**



### Disposable Support

To be used alongside the bedpan liner with patients under 15 stone / 210lbs / 95kgs.

**Case Quantity: 50**

**Product Code: 122AA050**



### Bedpan Liner

Ideal for general toileting of patients and can be used either in bed or in a commode chair.

**Case Quantity: 100**

**Product Code: 101AA100**





### Wash Bowl

Detergent-proof washbowl can hold warm water and soap for up to 2 hours (up to 45 degrees). Unique patented design and formulation. Holds a maximum of 4 litres.

**Case Quantity: 100**

**Product Code: 118AA100**



### Maxi-Wash Bowl

Detergent-proof washbowl can hold warm water and soap for up to 2 hours (up to 45 degrees). Unique patented design and formulation. Holds a maximum of 6 litres.

**Case Quantity: 40**

**Product Code: 117AA040**



### Small Bowl

General purpose bowl, ergonomically shaped with integrated graduations.

**Case Quantity: 200**

**Product Code: 104AA200**



### Medium Bowl

General purpose bowl, ideal for handling larger volumes of liquid.

**Case Quantity: 200**

**Product Code: 111AA200**



### Large Bowl

General purpose bowl, ideal for handling larger volumes of liquid.

**Case Quantity: 100**

**Product Code: 112AA100**



### Jug

General purpose measuring jug with ergonomic handle for improved grip and integrated graduations.

**Case Quantity: 100**

**Product Code: 110AA100**





### Midi Slipper Pan Liner

Ideal for general toileting of patients with limited mobility in bed. Wedge-shaped design slips underneath patient without lifting or rolling.

**Case Quantity: 100**

**Product Code: 109AA100**



### Maxi Slipper Pan Liner

Ideal for general toileting of patients with limited mobility in bed. Wedge-shaped design slips underneath patient without lifting or rolling.

**Case Quantity: 100**

**Product Code: 114AA100**



### Kidney Dish

General purpose receptacle, ideal for holding a variety of medical items including dressings, wipes or surgical instruments.

**Case Quantity: 260**

**Product Code: 105AA260**



# VERNAGEL

## EASES NURSE WORKLOAD

Saves laundry costs

Reduces risk of cross infection

Minimises residual odours

1 sachet solidifies up to 1.2 litres



*Suitable for all  
single-use pulp  
containers*

# NEW !



Vernagel is a super absorbent polymer which prevents spillages and leaks by solidifying liquids, whilst still being able to be disposed of in all pulp disposal units.

Description	Product Code	Size	Case Qty
Vernagel 100 Sachets	450SC100	7g per sachet	1
Vernagel Shaker	456MA475	475g	1
Vernagel Large Tub	456MA400	4kg	1



# Supports Solutions

We offer a range of easy-clean plastic supports for our in-bed toileting solutions. These supports help prevent products crushing and the associated spillage and discomfort.



## **Bedpan Support**

To be used alongside the bedpan liner with patients over 15 stone / 210lbs / 95kgs.

**Product Code: 306ZP001**



## **Midi Slipper Pan Support**

Plastic support for slipper pan liner, increasing strength for when used in bed. Suitable for use with smaller slipper pan liner.

**Product Code: 303ZP001**



## **Maxi Slipper Pan Support**

Plastic support for slipper pan liner, increasing strength for when used in bed. Suitable for use with larger slipper pan liner.

**Product Code: 304ZP001**



## **Bedpan Support**

Plastic support for bedpan liner, increasing strength for when used in bed.

**Product Code: 301ZP001**



## **Small Bowl Support**

Plastic support for small bowl, increasing strength for when used as a child's potty.

**Product Code: 302ZP001**



# Lids

We offer a range of macerator-friendly lids for a variety of our pulp products. These lids help to prevent spillage and maintain patient dignity.



### Bedpan Lid

Designed for use with our Bedpan Liner 101AA100) and Commode Pan (123AA150).

**Case Quantity: 100**

**Product Code: 197ZS100**



### Bedpan Lid

Designed for use with our Bedpan Liner 121AA075.

**Case Quantity: 100**

**Product Code: 191ZS100**



### Midi Slipper Pan Lid

Designed for use with our Midi Slipper Pan 109AA100.

**Case Quantity: 100**

**Product Code: 196ZS100**



### Maxi Slipper Pan Lid

Designed for use with our Maxi Slipper Pan 114AA101.

**Case Quantity: 100**

**Product Code: 194ZS100**



### Small Bow I Lid

Designed for use with our Small Bowl 104AA200.

**Case Quantity: 300**

**Product Code: 198ZS300**







#### Medium Bowl Lid

Designed for use with our Medium Bowl 111AA100.

**Case Quantity: 100**

**Product Code: 195ZS100**



#### Maxi Washbowl Lid

Designed for use with the detergent-proof Maxi-Washbowl, 117AA040.

**Case Quantity: 100**

**Product Code: 199ZS100**



#### Washbowl Lid

Designed for use with our detergent-proof Washbowl 118AA100.

**Case Quantity: 100**

**Product Code: 190ZS100**



#### Male Urinal Lid

Designed for use with our Male Urinal Bottles 103AA120.

**Case Quantity: 192**

**Product Code: 125AA192**

**NEW!**



## OUR EVIDENCE

*Request a copy of our supporting evidence, demonstrating how our products are directly reducing risk and enhancing dignity.*

*An improvement strategy that incorporated the introduction of the Vernacare washbowl reported a 56% reduction in HCAs.<sup>1</sup>*



# Racking Solutions

We offer a range of wall-mounted racking solutions for efficient storage of our single-use containers & plastic



### Male Urinal Bottle (900ml)

Dispenser Rack, wall-mounted rack removes items from surfaces. Suitable for use with 900ml male urinal bottles.

**Product Code: 509ZS001**



### Male Urinal Bottle Holder

Rack for storing an individual male urinal at the end of a patient's bed. Suitable for use with both sizes/designs of male urinal bottle.

**Product Code: 504ZS001**



### VernaFem Dispenser Rack

Wall-mounted rack removes items from surfaces.

**Product Code: 511ZS001**



### Bedpan Liner Dispenser Rack

Wall-mounted rack removes items from surfaces. Suitable for use with all bedpan liners, slipper pan liners and large bowls.

**Product Code: 502ZS001**



### Bedpan Support Rack

Wall-mounted rack for storing up to five plastic bedpan supports.

**Product Code: 501ZS001**





### Bedpan Support Holder

Rack for storing an individual plastic bedpan support underneath a patient's bed.

**Product Code: 503ZS001**



### Slipper Pan Support Rack

Wall-mounted rack for storing up to five plastic slipper pan supports.

**Product Code: 518ZS001**



### WashBowl Dispenser Rack

Wall-mounted rack removes items from surfaces. Suitable for use with detergent proof wash bowls.

**Product Code: 510ZS001**



### Maxi-WashBowl Dispenser Rack

Wall-mounted rack removes items from surfaces. Suitable for use with detergent proof wash bowls.

**Product Code: 502ZS001**



### Small Bowl Dispenser Rack

Wall-mounted rack removes items from surfaces. Suitable for use with small bowl or jug.

**Product Code: 505ZS001**



### Medium Bowl Dispenser Rack

Wall-mounted rack removes items from surfaces. Suitable for use with medium bowl.

**Product Code: 515ZS001**



### Jug Dispenser Rack

Wall-mounted rack removes items from surfaces. Suitable for use with small bowl or measuring jug.

**Product Code: 505ZS001**



FEATURING



## DISPOSAL UNITS

**Vernacare's market-leading range of pulp-disposal units include the Vortex & Vortex+**

Our machines help ensure safe and effective disposal of human waste and single-use containers. All of our machines use SmartFlow™ technology alongside a range of other features designed to improve efficiency in busy sluice room environments.

### WHAT IS SMARTFLOW™ ?

SmartFlow™ is a unique maceration system that ensures waste is only released to drain once the machine's contents have been fully broken down.

The continued mechanical action inside the drum ensures that particles are fully dispersed, prior to the machine allowing the contents to be discharged.

This ensures that no dry or bulky material can pass into the pipework, potentially causing or contributing to blockages.



#### Vortex

- Hands-free opening
- Reduce the risk of cross-infection
- Auto-start functionality
- Start lock control
- Self-diagnosing display screen
- Easy-to-clean ergonomic design.

**Product Code: 2030ZA001 (230 Volts)**



**39%**

Can be 39% less expensive to maintain than alternative systems<sup>7</sup>



#### Vortex+

- Completely contactless operation
- Reduce the risk of cross-infection
- Auto-start functionality
- Start lock control
- Self-diagnosing display screen
- Easy-to-clean ergonomic design

**Product Code: 2040ZA001 (230 volts)**  
**Product Code: 2040CA001 (110 Volts)**



**96%**

Uses 96% less energy than alternative systems<sup>8</sup>

# DISPOSAL UNITS DEODORISER

The VernaClean Disposal Unit Disinfectant and Deodoriser range offers optimal performance for disposal unit infection control in healthcare facilities. VernaClean disinfectant is a concentrated deodorising liquid with antibacterial properties.



Suitable for use with all  
pulp disposal units



## VernaCleanTM

Antibacterial deodoriser is a concentrated deodorising liquid with antibacterial properties and a fresh lemon scent.

VernaCleanTM 6x1 litre bottle

**Product Code: 902SD1000**

VernaCleanTM 6x2 litre bottle

**Product Code: 902SD2000**



## VernaClean ActiveTM

Disinfectant is a concentrated deodorising liquid with antibacterial and sporicidal properties.

VernaClean ActiveTM 6x1 litre bottle

**Product Code: 902DL1000**

VernaClean ActiveTM 6x2 litre bottle

**Product Code: 902DL2000**



Key Feature	Key Benefit	VernaClean <b>ACTIVE</b>	VernaClean
<b>Sporicidal*</b>	Eradicates C Difficile	✓	
<b>Bactericidal</b>	Broad-spectrum disinfectant	✓	✓
<b>Ph neutral &amp; Alcohol free</b>	Safe for users and environment	✓	✓
<b>Combined cleaning &amp; disinfection</b>	Effective decontamination process	✓	✓
<b>Neutralise odours</b>	Produces a healthy working environment	✓	✓
<b>Compatible with Vortex, Vortex+ &amp; Compact</b>	Ensures a clean and disinfected machine at the end of each cycle	✓	✓



# COMMODES

## Toileting

# VernaChair

Developed in collaboration with clinicians from across the healthcare industry. From the bedside to the privacy of the bathroom, VernaChair is designed for safe and comfortable patient toileting.

The VernaChair commode can be dismantled into six parts\* for easy cleaning and reassembling without the use of tools. The chair's sturdy stainless steel frame and covered castors are backed by a 3 year warranty.

- The lightweight reusable rack is easy to clean and handle.
- Compatible with most reusable bedpans and commode pans.
- No fasteners, sits on the frame.

"Innovative, well-researched and well thought-out"

IP Nurce IPS 2014



### Vernachair Commode

- Durable moulded parts – easy to remove and clean
- Stainless Steel frame – withstands modern cleaning methods
- Robust design – manoeuvres easily
- Covered Castors – help prevent debris collection
- Compatible – fits with all bedpan/commode pan designs

**Product Code: 600ZA001**



### Vernachair Shower Chair

- Durable moulded parts – easy to remove and clean
- Stainless Steel frame – withstands modern cleaning methods
- Robust design – manoeuvres easily
- Covered Castors – help prevent debris collection
- Easy drainage - light, easy to drain and chemically resistant seat

**Product Code: 630ZA001**



### Vernachair

The original Vernachair is a Commode and Sani Chair all in one.

A superbly versatile piece of equipment that allows easy patient use and enhanced comfort. The Vernachair comes apart to increase cleaning compliance and to help increase infection prevention.

**Product Code: 537ZA001**





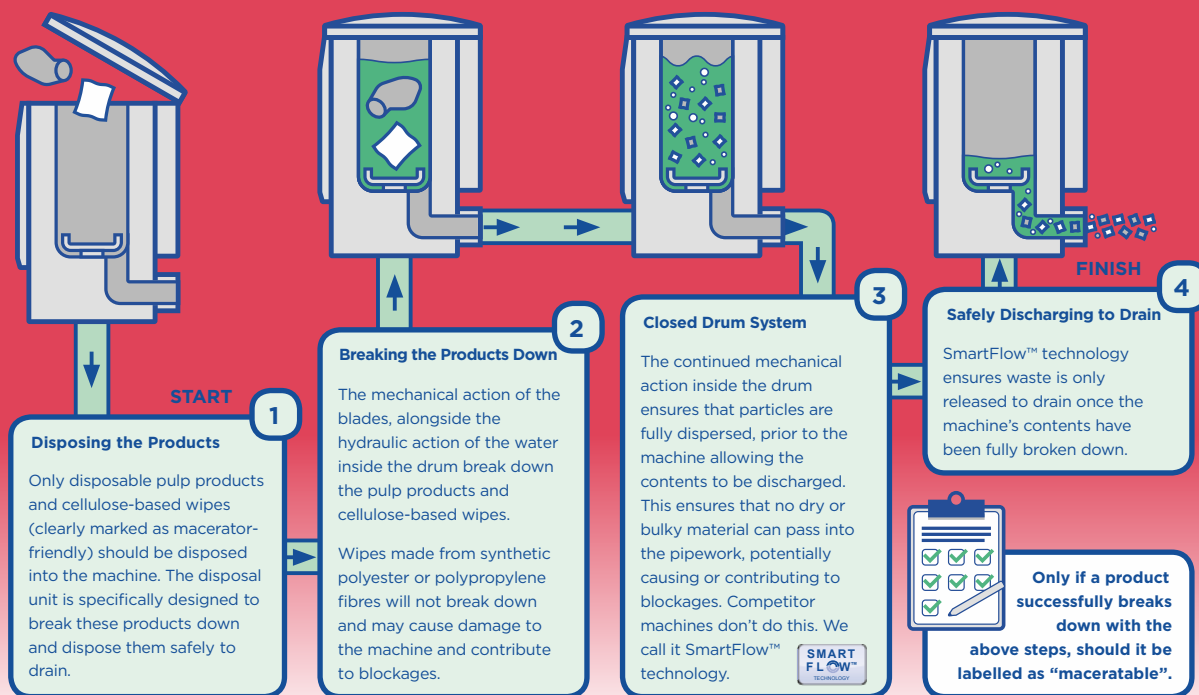
## WHAT MAKES A PRODUCT

# MACERATABLE

As the pioneers of the single-use system, Vernacare developed and launched the first single use pulp products, and disposal unit (sometimes called a macerator) over 50 years ago. Over the last five decades we have continued to grow our range of disposal unit-friendly products, now including a full range of wipes.

**Not all wipes are compatible with disposal units however, and not all disposal units are created equally.**

For more information, visit [www.vernacare.com](http://www.vernacare.com)



### Did you know?

We wrote the book on pulp - 'PAS 29 - Disposable pulp products for use in healthcare' was developed by Vernacare back in 1999.



### Always check the pack

All Conti® Senset and Oasis® Wipes are clearly labelled with the appropriate disposal guidance.



## WHAT MAKES A WIPE

# FLUSHABLE

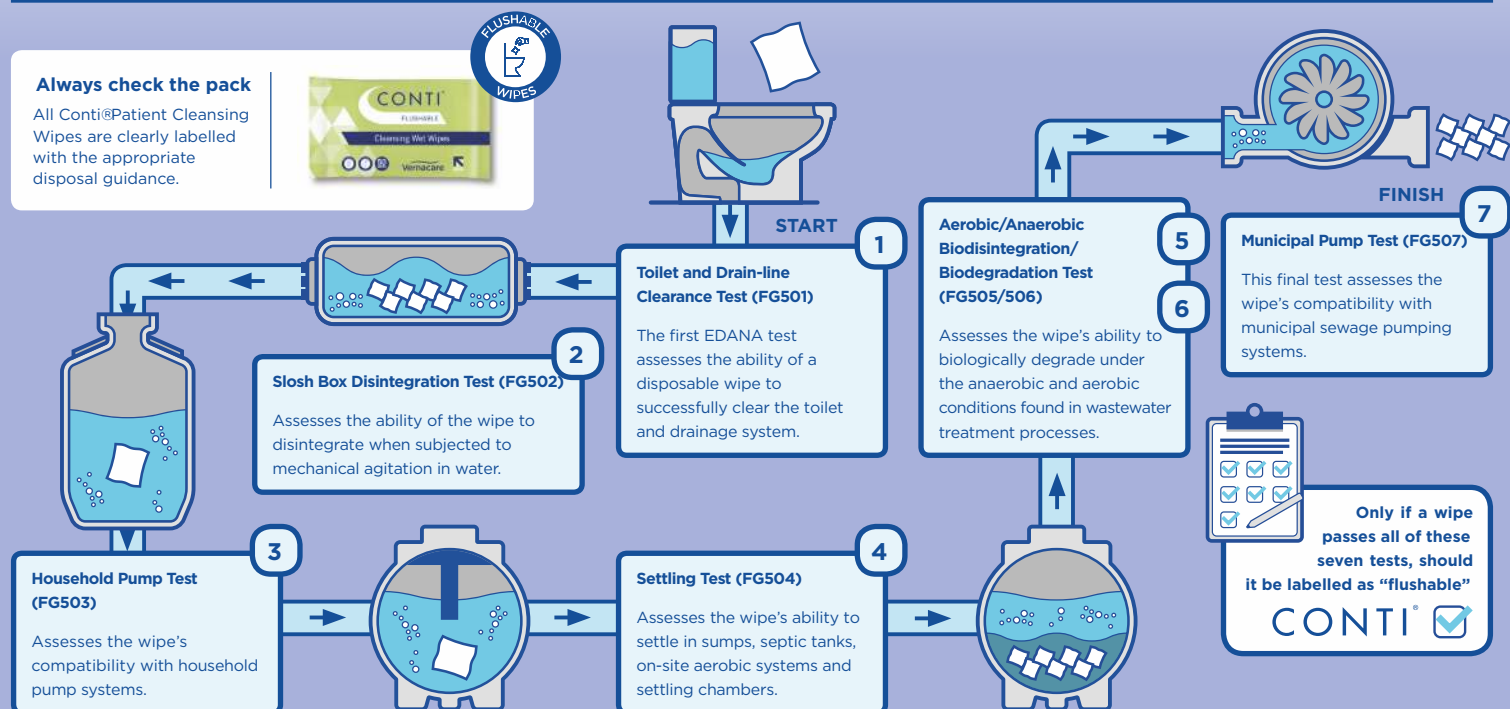
EDANA, the leading global association for the nonwovens industry, has worked for over a decade to define a series of rigorous dispersability tests to determine whether wipe materials can be labelled as flushable.

**Complying with these seven standards allows Vernacare to provide customers with flushable products of the highest standard.**

For more information, visit [www.vernacare.com](http://www.vernacare.com)

### Did you know?

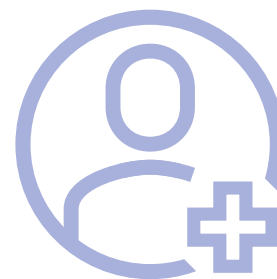
Conti®Flushable Wipes have been independently proven to be more dispersible than alternative brands.



# SKIN CLEANSING WIPES

## Personal Hygiene

A range of personal cleansing wipes, foams and body washes, developed to enhance dignity and reduce risk to patients. Market-leading brands include Conti, Oasis, Senset & Clinisan.



### CONTI® PATIENT CLEANSING DRY WIPES :

The latest NICE guidelines highlight the requirement for a cultural shift within the NHS to become a truly patient centred service, focussing on improving the patient experience. This experience is directly linked to the quality of care they receive and the quality of the products used to deliver that care.



- + Preferred brand with in the NHS and care sector for over 35 years.
- + Easy ,single -wipe dispensing helps prevent over-usage and control costs.
- + Independently proven to de more absorbent than other brands

*81% more absorbent than other brands.<sup>4</sup>*



## CHOOSING THE RIGHT PRODUCT FOR YOUR PATIENT'S NEEDS:

	ABSORBENCY	STRENGTH	SOFTNESS	COST
Conti® Lite				
Conti® Standard				
Conti® Soft				
Conti® SoSoft				
Conti® SuperSoft				
Conti® Washcloth				
Conti® Flushable				

Conti® patient cleansing wipes support healthcare workers in delivering excellent standards of care for their patients, offering an extensive range for all your needs. Combining strength, softness and absorbency, Conti® wipes provide the ideal solution for everyday patient cleansing, whilst also being gentle enough to be used on the most fragile and sensitive skin.



Conti® Lite – Provides the most cost-effective option for healthcare professionals, combining strength and performance with a light weight material.

Code	Wipe Size	Pack Qty	Case Qty
CLW110	32 x 30cm	100	32

**Material** Polypropylene **Weight** Light



Conti® Standard – Ideal for everyday use providing a cost-effective wipe that combines strength and performance with a light weight material.

Code	Wipe Size	Pack Qty	Case Qty
CBW010	26 x 20cm	100	32

**Material** Polypropylene **Weight** Light



Conti® Soft – Combines softness and absorbency with a more 'textile' feel. Conti® Soft is ideal for everyday cleansing needs and soft enough for use on fragile and sensitive skin.

Code	Wipe Size	Pack Qty	Case Qty
CSW110	32 x 30cm	100	32

**Material** Polypropylene / Viscose **Weight** Medium



Conti® SoSoft – Provides highly effective cleansing using a heavier material with added cotton creating a wipe that is soft yet durable, ideal for use on sensitive skin.

Code	Wipe Size	Pack Qty	Case Qty
CPV110N	32 x 27cm	100	20

**Material** Polypropylene / Viscose / Cotton **Weight** Heavy



Conti® SuperSoft – Is the ultimate wipe for softness and absorbency. Its softness makes it ideal for cleansing all areas of the body, fragile and sensitive skin.

Code	Wipe Size	Pack Qty	Case Qty
CXW110	32 x 30cm	100	16

**Material** Viscose / Polyester **Weight** Heavy



Conti® Washcloth – Is made from airlaid tissue and is ideal for full body cleansing. Soft, strong and highly absorbent, this wipe lathers well with soap and water and remains durable even when wet.

Code	Wipe Size	Pack Qty	Case Qty
CWW075N	30 x 23cm	75	24
CWW075P	30 x 30cm	75	16

**Material** Airlaid Tissue **Weight** Heavy



Conti® Flushable – Independently proven to be more dispersible than alternative brands, minimising the risk of costly drain blockages.<sup>5</sup>

Code	Wipe Size	Pack Qty	Case Qty
CFW050	33 x 22cm	50	15

**Material** Cellulose Wood Pulp **Weight** Heavy



## SKIN CLEANSING WIPES

Personal Hygiene

# NEW!!

### CONTI® SKIN CLEANSING WET WIPES:



Conti® patient cleansing wet wipes offer convenient cleansing for patients' hands and face, helping to keep skin feeling clean and refreshed.

- + Soft, strong and dermatologically tested.
- + Alcohol, Lanolin and Paraben free.
- + New super-soft material and improved formulation.

Description	Wipe Size	Pack Qty	Case Qty	Code
Conti® Wet Wipes	24 x 22cm	50	24	RSC777

### CONTI® DRY & WET FLUSHABLE WIPES:

Conti® Flushable wipes are independently proven to be more dispersible than alternative brands, minimising the risk of costly blockages.<sup>6</sup> Having passed all of the relevant INDA/EDANA tests<sup>7</sup>, Conti® Flushable wipes make use of a unique dispersible binder system, combining strength and softness with unparalleled dispersibility. The wipes are suitable for a variety of applications including continence care and retain strength even when wet.



- + Soft, strong and highly absorbent.
- + Retains strength when wet.
- + Fully flushable and dispersible.
- + Environmentally friendly.

*"Three-quarters of sewer blockages are caused by flushing inappropriate wipes." <sup>8</sup>*

Code	Wipe Size	Pack Qty	Case Qty
CFW050	33 x 22cm	50	15
RSC767	24 x 22cm	50	20

### SENSET DRY & WET WIPES:



- + Suitable for full-body cleansing, including continence care.
- + Easy single wipe dispensing to prevent over-usage and control costs.
- + New larger, thicker wipes available in a variety of pack sizes

Description	Code	Wipe Size	Pack Qty	Case Qty
Senset Maceratable Dry Wipes	900DY075	30 x 29 cm	75	16
Senset Maceratable and Flushable Wet Wipes	900PW012	22 x 17 cm	12	42
Senset Maceratable and Flushable Wet Wipes	900PW024	22 x 17 cm	24	24
Senset Maceratable and Flushable Wet Wipes	900PW050	22 x 17 cm	50	12





# BED BATH SOLUTIONS

Traditional bed bathing practices using soap and water pose many inherent issues for both patient and nurse. Patient comfort and emotional well-being can be compromised, and various studies have been published highlighting the link between traditional soap and water bathing and Health Care Associated Infections (HCAIs).

Inherent issues associated with traditional bed bathing practices:

- + Time and Cost.
- + Infection Control.
- + Patient Experience.

## TIME AND COST:

Traditional bed bathing techniques involve the use of reusable/disposable basins, washcloths, soap, emollients and towels, all of which can be costly in comparison to pre-packaged solutions.

The time taken to gather this equipment, clean and disinfect basins and launder towels is also a significant time burden on nursing time.

*According to a study published in the British Journal of Nursing, use of the Oasis® Bed Bathing System could save £6,000 per ward per year and 21 hours of nursing time per week.<sup>9</sup>*

## PATIENT EXPERIENCE:

Traditional bed bathing practices often require manual re-positioning of the patient for bathing or hair washing. This can be uncomfortable and undignified for the patient, whilst being time consuming for nursing staff.

Soap and water is proven to dry the skin and compromise skin integrity, whilst bathing techniques using dry cloths and towels can also cause physical skin damage.

*Oasis® promotes skin health with a formulation that is specifically designed to provide immediate and long lasting moisturisation. Clinical tests have demonstrated that Oasis® improves skin moisturisation by 17%.<sup>10</sup>*

## INFECTION CONTROL:

Various studies have been published highlighting the link between traditional soap and water based bed bathing and HCAIs, in particular catheter-associated urinary tract infections (CAUTIs).

A recent study found that the removal of washbowls and replacement with a pre-packaged solution demonstrated a significant reduction in CAUTI rates of 88%.<sup>11</sup>

*Whilst being costly and time- consuming, traditional bed bathing can also pose a significant risk to patient safety. A recent study found that 62.2% of 'clean' wash basins were contaminated with pathogens including organisms such as VRE and MRSA.<sup>12</sup>*

### BED BATHING SOLUTIONS:

The Oasis® Bed Bathing range has been developed with patients and healthcare professionals in mind, providing a comfortable, therapeutic bed bathing solution without the issues associated with soap and water. All of our products are pre-impregnated with skin cleansers to gently bathe the patient whilst hydrating the skin. The Oasis® range is ideal for use on a variety of bed bound patients, including:

- ✚ Too ill - Intensive care or high dependency unit.
- ✚ Too weak - Frail or receiving palliative care.
- ✚ Immobile - Following major surgery.

The Oasis® range can either be warmed in the new Oasis® Warmer or used at room temperature.

- ✚ **Reduces potential for cross-contamination:**  
Each single-use item is disposed of after use, helping to reduce the potential for cross- contamination from reusable items.
- ✚ **Cost effective solution:**  
Proven to deliver savings and reduce nursing time when compared to traditional soap and water bed bathing.
- ✚ **Skin hydration and protection:**  
A dermatologically tested, pH balanced, lanolin and alcohol free formulation.
- ✚ **Improved patient experience:**  
Reduces the need for manual repositioning and manipulation of patients, helping save nursing time and maintain patient dignity.

*Oasis® products were found to be a suitable alternative to traditional soap and water bed bathing, providing a more efficient process, delivering cost and time savings. Ongoing support, training and education continues to engage staff and reinforce the positive change in practice and adoption of Oasis washcloths as the preferred bed bathing method.<sup>13</sup>*

*Study found that the removal of washbowls and replacement with a pre-packaged solution reduced CAUTI rates by 88%.<sup>1</sup>*





## OASIS® BED BATHING WASHCLOTHS:

Oasis® Bed Bathing Washcloths are impregnated with a unique combination of skin cleansers to help remove sweat, dirt, urine and faeces from the skin. The large, soft washcloths are intended to be used individually, with one single-use cloth per anatomical region. This helps to ensure effective cleansing and minimises the risk of cross-contamination. **Maceratable and non-maceratable options available.**



Save 21 hours  
of nursing time  
per week.<sup>9</sup>

- ➕ Added moisturisers hydrate the skin.
- ➕ Lanolin, alcohol and latex-free.
- ➕ Quick drying after application to the skin.
- ➕ Variety of pack sizes to allow for a full or partial bed bath.
- ➕ Scented and unscented options available.

Description	Size	Pack Qty	Case Qty	Code
Oasis® Bed Bath Scented	33 x 22cm	10	24	RSC901
Oasis® Bed Bath Unscented	33 x 22cm	10	24	RSC902N
Oasis® Bed Bath Scented	33 x 22cm	8	30	RSC912
Oasis® Bed Bath Unscented	33 x 22cm	8	30	RSC913N
Oasis® Bed Bath Unscented	33 x 22cm	5	48	RSC910N
Oasis® Bed Bath Maceratable Scented	30 x 22cm	8	33	MBB08
Oasis® Bed Bath Maceratable Unscented	30 x 22cm	8	33	MBB08UP
Oasis® Bed Bath Maceratable Scented	30 x 22cm	5	48	MBB05
Oasis® Bed Bath Maceratable Unscented	30 x 22cm	5	48	MBB05UP
Oasis® Washmitt Scented	-	8	30	RSC604A
Oasis® Washmitt Unscented	-	8	30	RSC605A

## OASIS® SHAMPOO CAPS:

Oasis® Shampoo Caps are pre-impregnated with a mild shampoo and conditioner. The massaging action releases shampoo and conditioner into the hair and hydrophilic (water-loving) fabric absorbs oil and dirt retaining it within the cap.



- No rinsing is required and the hair dries in minutes once the cap is removed.
- Leaves hair fresh and clean, whilst improving the patient's sense of well-being.
- Reduces the inconvenience of bowls of water and uncomfortable head positioning for patients.
- Single-use cap helps reduce cross infection risk.

Description	Size	Pack Qty	Case Qty	Code
Oasis® Shampoo Cap	-	1	30	RSC905
Oasis® Shampoo Cap Unscented	-	1	30	RSC905UP

## OUR SKIN CARE GUIDE

**Did you know...Your skin is your largest organ.**

It has a surface area of around 2 square metres, and accounts for around 16% of your body weight!<sup>1</sup>

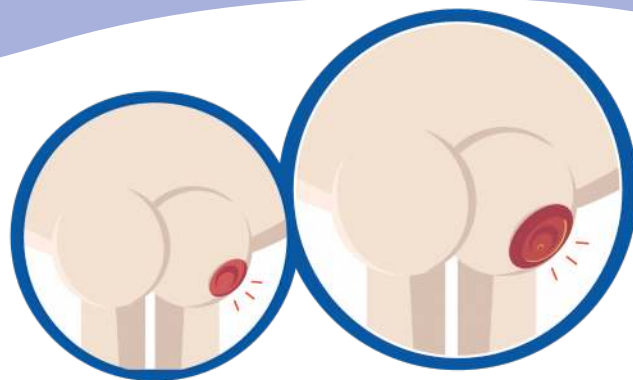
That's worth looking after! In fact, it's important to take extra care, especially if you or the person you care for isn't mobile. Lots of pressure on skin covering the bony areas of your body, such as the bottom can cause pressure ulcers.<sup>2</sup> Skin may not break at first... but if the pressure ulcer gets worse, open or deep wounds can develop.<sup>3</sup>

### Spot the signs early!

Look out for:

- + Discoloured skin
- + Skin that feels warm or hard
- + Pain or itchiness<sup>3</sup>

Many people don't know that incontinence can lead to pressure ulcers. That's because, when urine and faeces come into contact with the skin they change the natural pH (making it alkaline), which causes redness and skin breakdown.



#### Surface:

Make sure your patients have the right support



#### Skin inspection:

Early inspection means early detection - show patient and carers what to look for.



#### Keep Moving:

Get your patient to move around regularly during the day.



#### Incontinence or Moisture:

Your patients need to be clean and dry.



#### Nutrition or hydration:

Help patients have the right diet and plenty of fluids.

## CONTI® CONTINENCE CARE

Conti® Contenance Care Wipes provide a convenient time- saving solution for continence care, delivering gentle and effective skin cleansing. The wipes are able to replace traditional methods such as preparing bowls of soap and water, dry wipes, cleansing foams and barrier creams.

Dermatologically tested and pH balanced, the wipes cleanse, moisturise and deodorise whilst offering barrier protection to the skin.

- + Gentle, effective and convenient skin cleansing.
- + pH balanced with added Dimethicone.
- + Offers barrier protection.

*Recent studies have indicated that the use of continence care wipes, in place of traditional soap and water-based cleansing methods, had a positive impact on skin-care protocol compliance, whilst also reducing the burden of care and improving staff satisfaction.<sup>15</sup>*



*Incontinence-associated dermatitis (IAD) represents a significant challenge worldwide and is a well-recognised risk factor for pressure ulcer development.<sup>15</sup> IAD affects as many as 41% of adults in long-term care and is costly, painful and for the most part preventable.<sup>16</sup>*



**Conti® Contenance** - Provides a convenient time-saving solution for continence care, delivering gentle and effective skin cleansing.

**Material** Viscose/Polyester **Weight** Heavy

Code	Wipe Size	Pack Qty	Case Qty
RSC555	33 x 22cm	25	27

# CLINISAN™ SKIN CLEANSING FOAM:

Often used alongside the market-leading Conti® wipes, Clinisan™ Emollient Skin Cleansing Foam provides a convenient gentle and effective cleansing system for continence care. Ideal for use with bariatric patients or patients with urinary and/or faecal incontinence, Clinisan™ gently lifts soiling, whilst cleansing, restoring and moisturising the skin.

- + Convenient pre-packaged solution can save time.
- + Quick-drying formulation reduces friction caused by drying.
- + Emollients provide protective barrier supporting skin recovery.



*In clinical trials, Clinisan was able to maintain the integrity of healthy skin in 66% of patients in comparison with 37% of patients cleansing with soap and water.*

Description	Size	Case Qty	Code
Clinisan™ Skin Cleansing Foam	200ml	12	SEF200
	400ml	12	SEF400
Clinisan™ Bodywash	250ml	12	SBA250
	500ml	12	SBA500

*Clinical studies and structured product evaluations have consistently reported that Clinisan Emollient Skin Cleansing Foam is a cost effective method for reducing the incidence of incontinence induced skin breakdown.<sup>1</sup>*

# SENSET SKIN CLEANSING FOAM

Senset Skin Cleansing Foam provides a convenient gentle and effective cleansing system for continence care. Ideal for use with bariatric patients or patients with urinary and/or faecal incontinence, Senset gently lifts soiling, whilst cleansing, restoring and moisturising the skin.



Description	Code	Size	Pack Qty	Case Qty
Senset Skin Cleansing Foam 150ml	900FM150	150ml	-	12
Senset Skin Cleansing Foam 200ml	900FM200	200ml	-	12
Senset Skin Cleansing Foam 300ml	900FM300	300ml	-	12
Senset 3In1 Wash	900CW500	500ml	-	12

## SURFACE MEDICAL DEVICE WIPES

Environmental Cleaning &  
Disinfection



# ENVIRONMENTAL CLEANING & DISINFECTION

*A clean and safe environment is paramount to any healthcare setting. Vernacare offer solutions for both surface cleaning & disinfection and room decontamination.*

## DETERGENT WIPES

*AZODET® detergent wipes contain a formulation designed to remove organic matter from surfaces prior to disinfection as part of a two-step cleaning and disinfection process.*



Description	Size	Pack Qty	Case Qty	Code
AZODET™	33 x 22cm	50	25	81125
Flow wrap	29.5 x 22cm	100	15	AZD100W
AZODET™ Canister	25 x 20cm	200	12	AZD200NW



## TUFFIE

LARGE DETERGENT

*Tuffie detergent wipes are perfect for using anywhere where general cleanliness is required. They are alcohol free and lift soiling without leaving any residue.*

Description	Size	Pack Qty	Case Qty	Code
Tuffie Detergent Bucket	27 x 24cm	225	4	901DW225BX
Tuffie Detergent Flow Wrap	27 x 22cm	100	12	901DW100
Tuffie Detergent Flexible Canisters	24 x 17cm	150	6	901DW150FC
Tuffie Detergent Dispenser Refill	24 x 17cm	150	6	901DW150RP



# UNIVERSAL SANITISING WIPES

## Why use a Universal Sanitising wipe?

- Pre-packaged convenient solution
- Cleans AND disinfects
- Broad spectrum efficacy
- Eradicates 99.999% of pathogens
- Safe to use on a range of surfaces

**Eradicates  
99.999% of  
pathogens**

# AZOMAX®

AZOMAX® is a 2-in-1 cleaning and disinfectant range designed for professional use in healthcare areas such as hospital wards, care homes, opticians, GP and dental surgeries



## SPRAYS



Cleaning and disinfectant spray for use on hard surfaces

## WIPES



Cleaning and disinfectant wipes for use on hard surfaces

Description	Size	Pack Qty	Case Qty	Code
Azomax®Flow wrap - Hard Surfaces	33 x 22cm	50	20	AM050W
Azomax®Canister - Hard Surfaces	22 x 20cm	100	12	AM100W
	20 x 18cm	200	12	AM200W
Azomax®Spray - Hard Surfaces	500ml	N/A	12	AM500S

# TUFFIE 5

UNIVERSAL SANITISING

**Tuffie 5** is a powerful alcohol-free universal sanitising wipe for cleaning and disinfecting surfaces and non-invasive equipment.

- + The new formulation has proven efficacy in the new rigorous 4-Field Test (BS EN16615:2015)
- + Ideal for use on mattresses, beds, commodes, door handles, hoists, trolleys and other general equipment.



Description	Size	Pack Qty	Case Qty	Code
Tuffie 5 Bucket	27 x 24cm	225	4	901SW225BX
Tuffie 5 Flexible Canisters	24 x 17cm	150	6	901SW150FC
Tuffie 5 Dispenser Refill	24 x 17cm	150	6	901SW150RP
Tuffie Wipes Wall Dispenser	-	-	1	520ZS001

Studies outline that surface decontamination quality is dependent upon good practice and within clinical areas, healthcare workers must understand their personal responsibility when cleaning equipment.<sup>20</sup>





# **SURFACE MEDICAL DEVICE WIPES**

Environmental Cleaning &  
Disinfection









**Lynch Medical Supplies**  
**Unit 4A Feltrim Business Park**  
**Swords**

**Co. Dublin**

**Tel: +353 (0)1 8084550**

**Fax: +353 (0)1 8084551**

**E-mail: [orders@lynchmedical.ie](mailto:orders@lynchmedical.ie)**

**Web: [www.lynchmedical.ie](http://www.lynchmedical.ie)**